





Dear Forex Trader,

Thank you for purchasing the Theorem EA!

Our main goal is to provide the best service for all of our customers, in order to be able to earn money on the forex market. Please read this Guide thoroughly! If you could not find the answer to your question feel free to contact our customer service. We wish you lot of success in forex trading!

Theorem EA Analyzes the market and auto determines the entry levels based on the finding of price fluctuations in quiet periods.

The direction of the trade is determined by the EA's clever adaptive system which has a profit ratio of over %90.

The most powerful part of the EA is the Smart Auto-Close function that has been developed after many years of market experience

Theorem tracks TP/SL breakouts of the open trades and auto-closes them according to market conditions  
this means that the TP/SL levels are dynamic and not static.

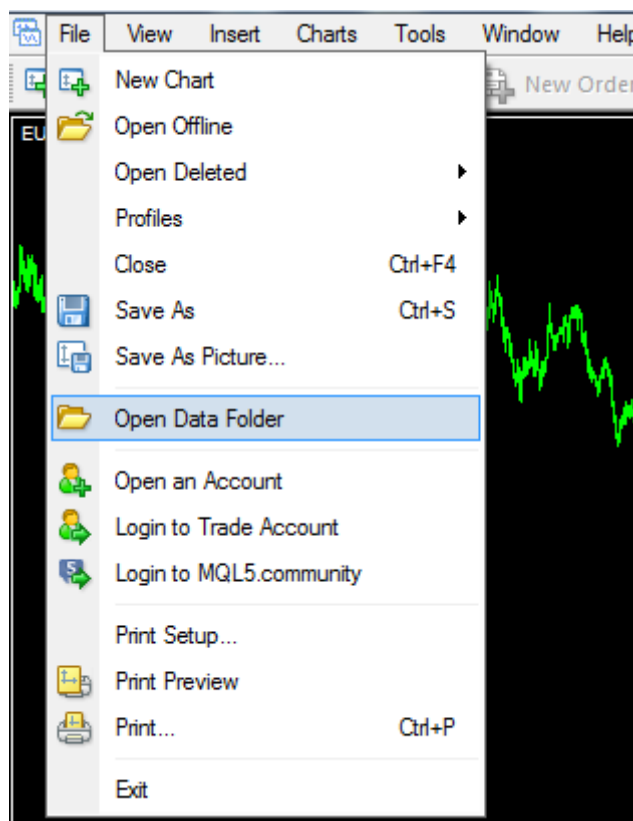
On top of that,  
Theorem has also another security so that if everything fails,

It has the normal Stop Loss which secure your balance

## How to install THEOREM Expert Advisor

### Copy the files

First please open your MetaTrader4 Terminal. Click on "*File*" in the top left corner and select "*Open Data Folder*".



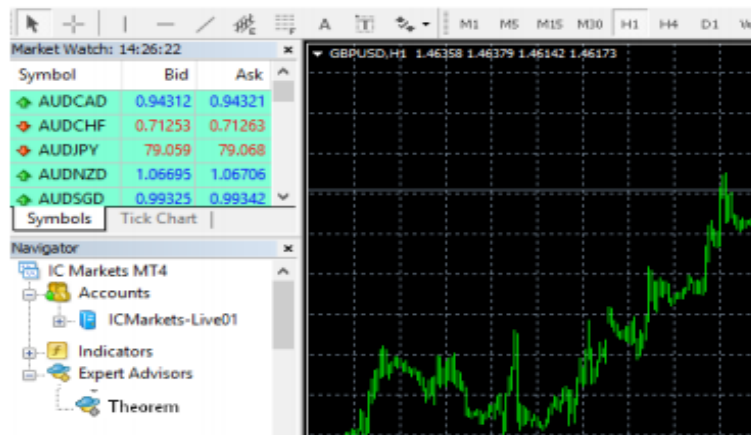
Go to */MQL4/Experts* folder. Copy here the downloaded *Theorem .ex4* file.



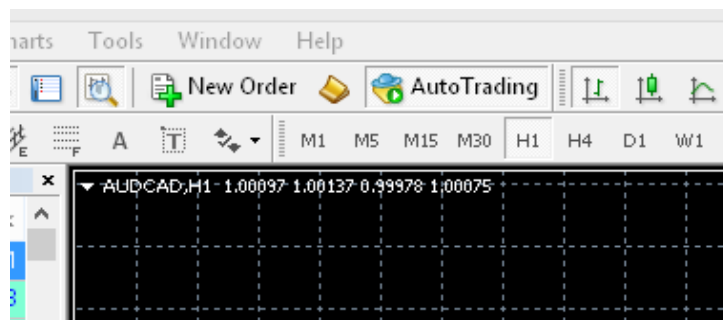
Please restart your MT4 terminal (or refresh the Expert Advisors tab).

## Running Theorem EA

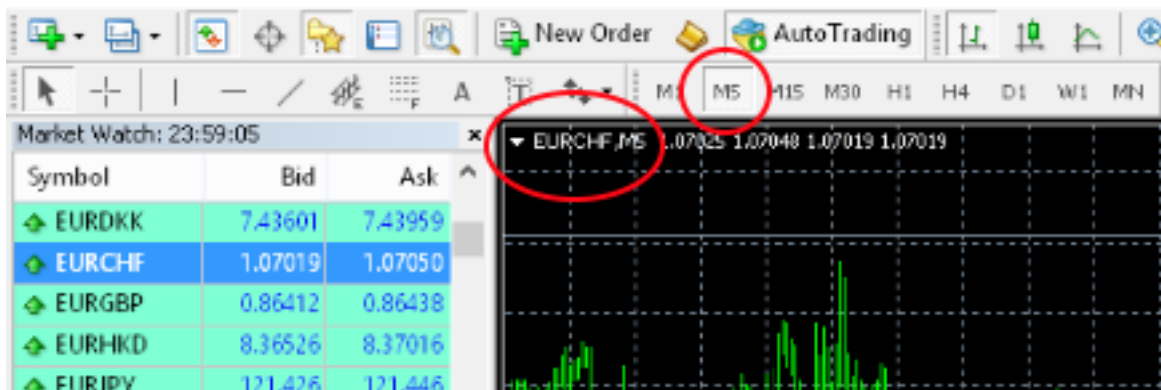
After the successful installation you will see the Theorem in the Navigator Tab. If you can't see the "Navigator" please click on View then select Navigator (or press ctrl+N).



To run the EA you have to allow automated trading. Click "AutoTrading"



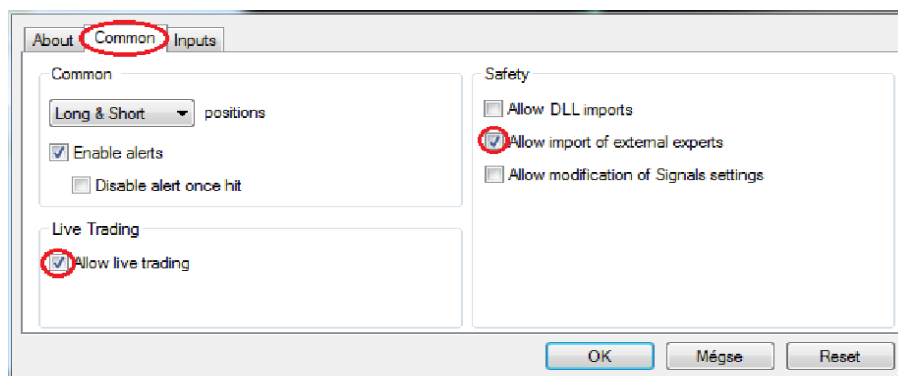
Open EURCHF chart and set it to 5 Minute Timeframe as in figure bellow



To run the Theorem Robot, drag and drop it to the chart. A pop-up window will appear.

Select

“Common” tab and check the properties as you can see in the picture below.



Next please select "Inputs" tab to set up the EA.

## Settings / Inputs

Setting up Theorem and Understanding each Input

Expert - Theorem

About Common Inputs

Variable	Value
ab ____General_Settings____	General Settings
123 MagicNumber	300001
ab TradeComment	Theorem
123 MaxSlippage	20
123 MaxSpread	50
AggressiveMode	false
TrailingOn	false
123 TrailingStep	3
Enable_Buy	true
123 Algo1	630
1/2 Filter1	431.0
Enable_Sell	true
123 Algo2	261
1/2 Filter2	519.0
ab ____TPSL____	TP & SL
ab _mm_	--- MONEY MANAGEMENT ---
123 MoneyManagementModel	RiskBased
1/2 RiskPercentPerTrade	10.0
1/2 FixedLot	0.1
1/2 TakeProfitBuy	50.0
1/2 TakeProfitSell	50.0
1/2 StopLoss	50.0
SmartAutoClose_Buy	true
123 Algo3	311
1/2 Filter3	326.0
SmartAutoClose_Sell	true
123 Algo4	891
1/2 Filter4	619.0

Load Save

Cancel Reset

Filter4	609.0
Time_Filter	Time_Filter_GMT
AutoGmt	false
ManualGmtOffset	2
StartHourBuy	21
StartMinuteBuy	0
StopHourBuy	23
StopMinuteBuy	45
StartHourSell	21
StartMinuteSell	0
StopHourSell	23
StopMinuteSell	45
TradeFriday	true
FIFOCompliant	false
MarketOpenDelayHours	0
Information	Disable for Faster Backtest
enableGui	false

Load Save

Cancel Reset

MagicNumber - Trades ID

MaxSlippage - maximum allowed price slippage

MaxSpread - Maximum spread to allow trades

Trade Comment - A comment for each trade

AggressiveMode - False means "Smartclose unique feature will act at Stop Loss and close trades as extra precaution"  
True means "Smartclose feature will close winning trades only" This is measured as Aggressive

Account Type - FIFO Compliant/NonFIFO Compliant This is useful for USA accounts

Enable\_Buy - Enable long trades

Algo1 - Algorithm 1 for long direction

Filter1 - Filter used to allow long trades

Enable\_Sell - Enable short trades

Algo2 - Algorithm 2 for short direction

Filter2 - Filter 2 used to allow short trades

MoneyManagement - Use money management or fixed lot size

Risk - Risk percentage of your balance when using Money Management

FixedLotSize - Use fixed lot size

TakeProfitBuy - Take profit for Long trades

StopLossBuy - Stop loss for long direction

TakeProfitSell - Take profit for short trades

StopLossSell - Stop loss for short direction

TrailingStart - Trailing distance

TrailingStep - Trailing step

SmartAutoClose\_Buy - Enables the smart AutoClose "Unique feature" for long trades advised to use it to protect your account

Algo3 - Algorithm 3 used for smart autoclose

Filter3 - Filter 3 used for smart autoclose

SmartAutoClose\_Sell - Enables the smart AutoClose "Unique feature" for short trades advised to use it to protect your account

Algo4 - Algorithm 4 used for smart autoclose

Filter4 - Filter 4 used for smart autoclose

AutoGmt - computer time should be GMT UTC for this to work properly

ManualGmtOffset - Set the GMTOffset of your broker manually if AutoGMT is not used

StartHour - Time to start trading

StartMinute - Minute to start trading

StopHour - Hour to stop trading

StopMinute - Minute to stop trading

Audible\_Alerts - Enable Alert

Push\_Notifications - Enables Push Notify

Trade Friday - True False

EnableGui - Show information on chart Close this function for FASTER backtest



For any questions, contact [TheoremEA.com](http://TheoremEA.com)  
We can set you up remotely







