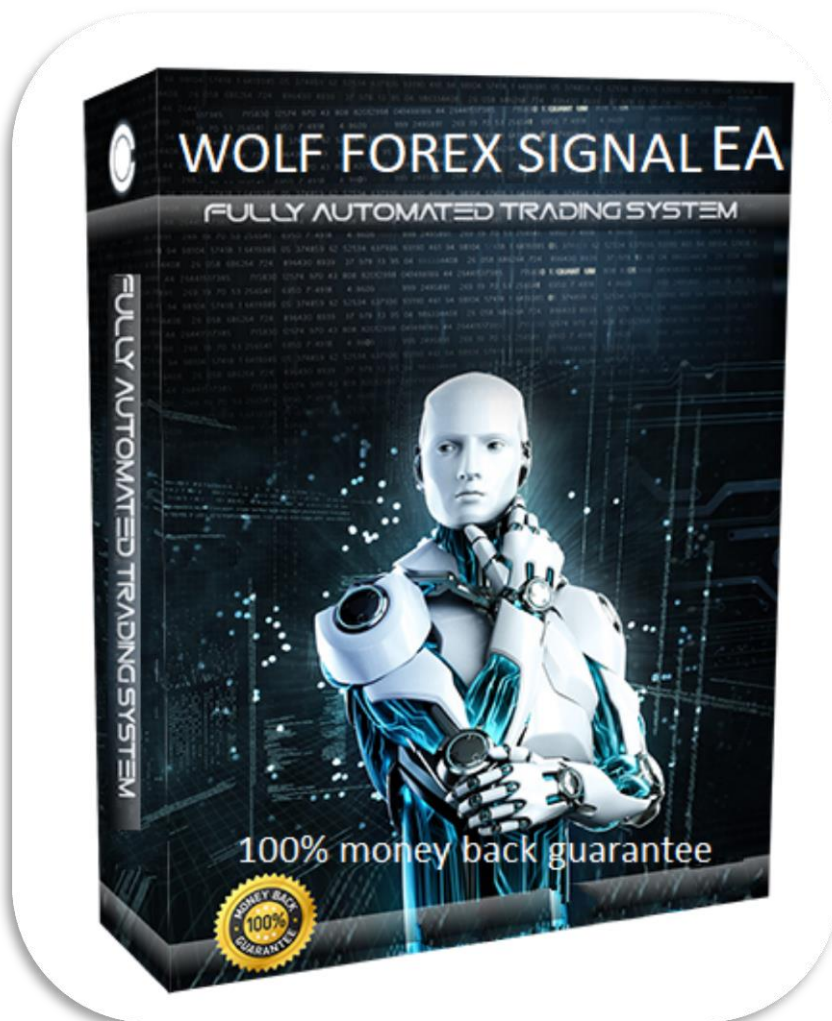


WOLF FOREX SIGNAL EA



Automatic
trading
system



WOLF FOREX SIGNAL EA It is a fully automated, mid-term, low-risk expert selected on demand in settings. To determine optimal entry points, an Adaptive Price Action Analysis module is used, which you will find in a wide orange bar when you turn on the expert

EA No, Network, Martingale, Arbitrage. Each position includes a stop loss. All open transactions are accompanied by an advanced control algorithm, which is based on a phased trailing stop and a multi-step profit-taking system. The expert advisor includes protection against high spreads, separate trading filters and allows you to trade with a fixed contract or use an automatic lot account based on the MM unit.

Advantages

Adaptive Price Action Analyzer

Dynamic displacement correction system;

Multistage gain closing algorithm;

Every trade is protected by stop loss;

No martingale, no arbitrage;

High spread protection

Flexible settings.

Every trade is protected by a stop loss

EA is not a broker or spread sensitive, you can choose any broker you trust

Good resistance to unexpected market events

Recommended parameter:

1. ANY broker account.
2. minimum deposit of 500 \$ USD for one pair .
3. use it in **M15** time frame
4. recommended symbol is `eurusd/ gbpusd / eurcad / audjpy`

NOTE /// Before you buy my product, take into account that the expert was tested on several dysfunctional accounts and brokers, and it was also tried on a real account after it was offered for sale.

Please be aware of the risks involved

: 1) Please do not over-believe the backtest result. Nobody can predict the future 100%.

2) I am not using any .set file, because I believe that the best strategy should not be disclosed to the public but we can still serve you.

3) Sometimes, market conflict may cause the account to lead to a short period of drawdown, please prepare and wait for your profit.

4) It depends on good brokerage conditions, such as low spreads, slippage, and good execution

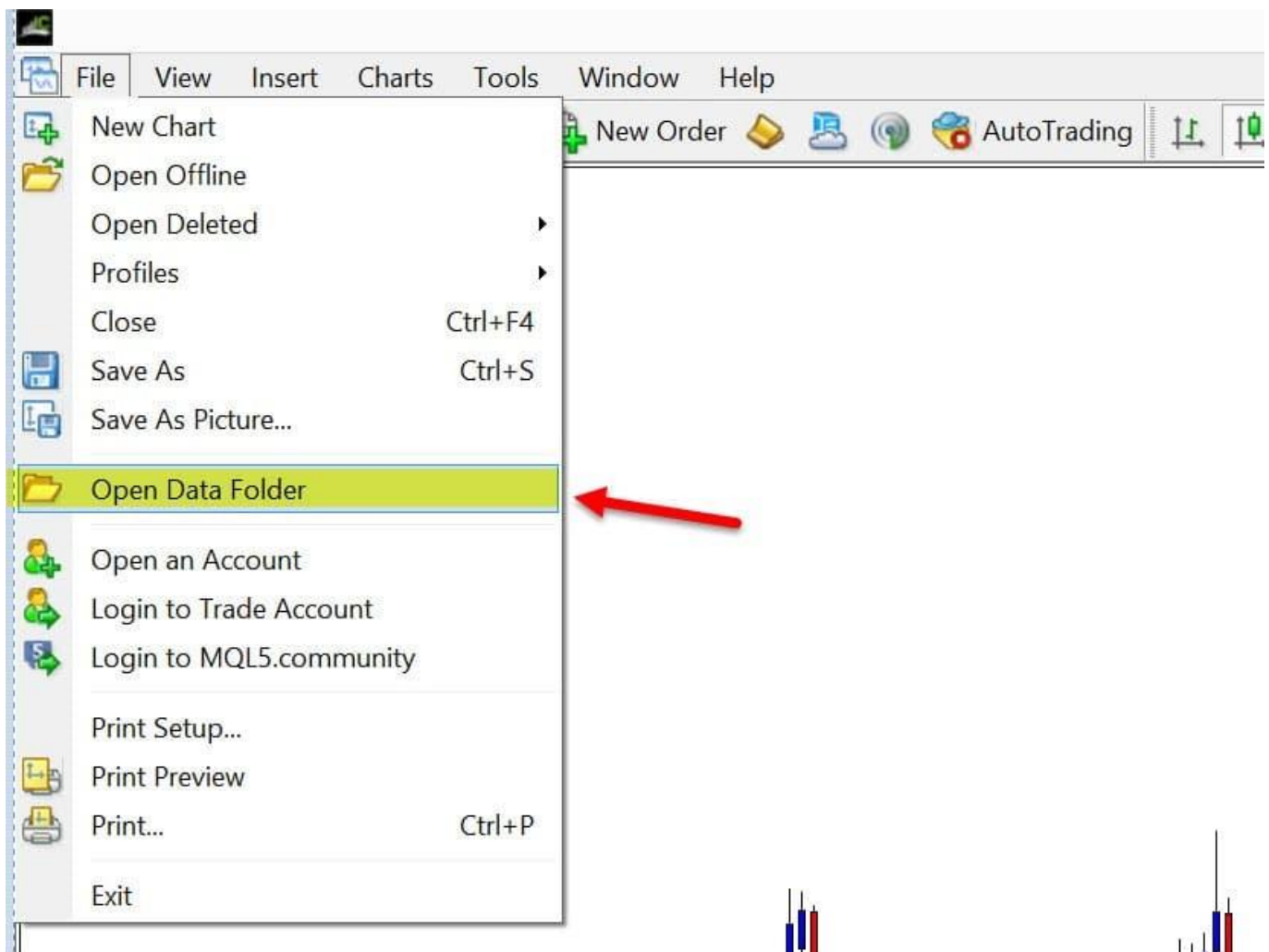
How to Install Expert Advisor to MT4

To manually install an expert advisor or indicator, the process is very simple to follow.

Firstly, you want to locate the installation files on your MetaTrader 4 platform and in almost all cases, it's going to be located in a common location that is under your C drive. These files are often stored in hidden files folder and access to them is very difficult.

In order to access the file folder where we have to install different indicators and EAs, we're going to need to do it directly from the [MT4 platform](#).













The fastest way to locate the installation folder on your PC is to go directly into your **MT4 platform >> File >> Open Data Folder**



MetaTrader 4 Installation Folder Source

If you're trying to install an expert advisor, you will have to go inside another special location the **MQL4 >> Experts** folder and copy / paste your EA file into the adequate folder. See below;

 config	23/10/2016 1:40 PM	File folder
 history	23/10/2016 1:40 PM	File folder
 logs	14/03/2019 9:55 AM	File folder
 MQL4 	7/01/2019 1:08 PM	File folder
 profiles	12/03/2019 11:11 A...	File folder
 templates	17/05/2015 10:36 PM	File folder
 tester	18/05/2015 1:31 AM	File folder

 Experts 	13/03/2019 10:44 A...	File folder
 Files	17/09/2017 1:28 PM	File folder
 Images	17/05/2015 10:36 PM	File folder
 Include	4/06/2015 8:45 AM	File folder
 Indicators	7/01/2019 10:32 AM	File folder
 Libraries	7/01/2019 10:32 AM	File folder
 Logs	14/03/2019 9:55 AM	File folder
 Presets	16/02/2016 7:03 AM	File folder
 Projects	17/05/2015 10:36 PM	File folder
 Scripts	7/01/2019 10:32 AM	File folder
 Shared Projects	7/01/2019 1:08 PM	File folder

After the installation is completed, you will have to restart your MT4 platform in order for your indicator or EA to be viewable in your MetaTrader 4 platform.

It's important to always restart after installing any expert advisor or indicator so that the MT4 can recognize the file just installed.

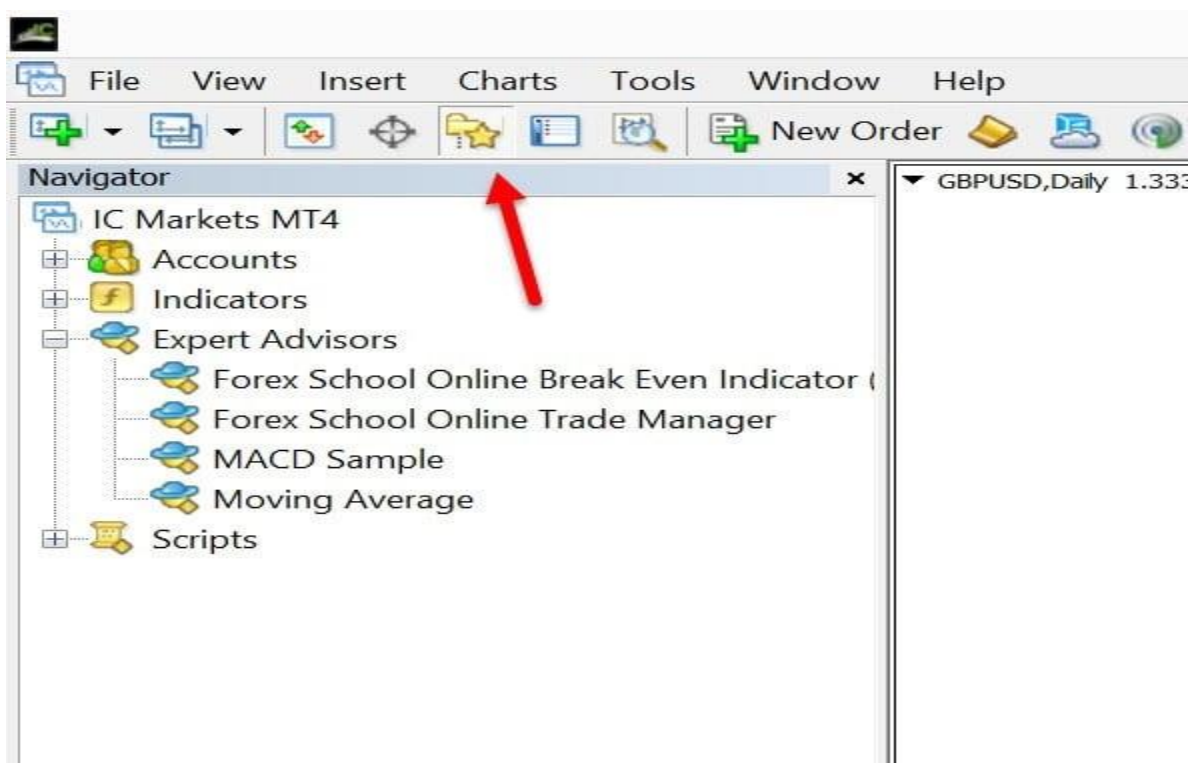
Running an Expert Advisor – EA in MetaTrader 4

Once you have installed an EA it will then be available for your own use in the expert advisors section inside the Navigator window on your MT4 platform.

The image below highlights where 'Expert Advisers' are located under the Expert Advisors drop down menu inside the Navigator window on your MT4 platform.

In order to activate your EA or indicator you will have to drag and drop the expert advisor onto a price chart.

Even though there are multiple different ways of activating your indicators or EA's, such as right click and selecting 'attach to a chart' that's the simplest way.



In order to locate the Navigator Window, go to **Menu >> View >> Navigator**, or you can always use the keyboard shortcut **CTRL+N**.

Once you have located your EA in the navigator window, either drag and drop to a chart or right-click and select “*Attach to a chart*”.

Once the EA is attached to the chart you will be able to see the name of your Expert Advisor at the top right-hand side of the chart which will be followed by a smiley face if working correctly.

Forex School Online Trade Manager 😊

Expert Advisor Modes

There are three distinctive modes in which your Expert Advisor can appear on your chart. These are shown with three different emoticons:

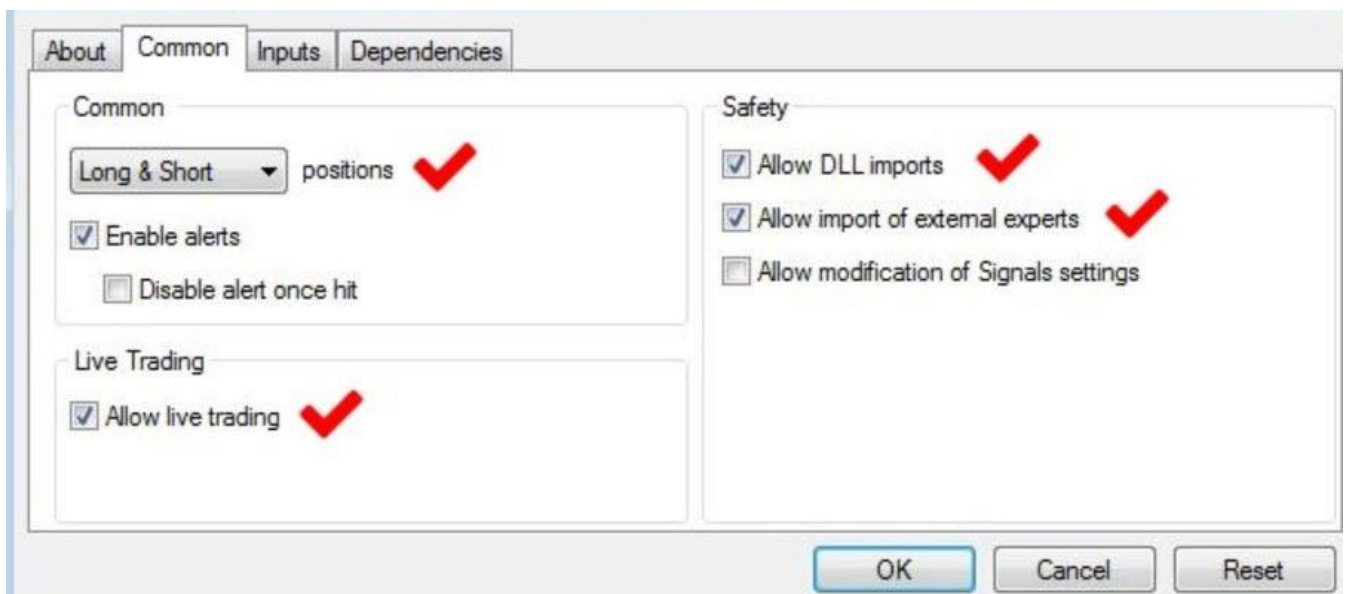
1. “ X ” means that your EA is disabled.
2. “ 😞 ” means that your EA is enabled, but the option “Allow Live Trading” is disabled or there is another error.
3. “ 😊 ” is indicative that your EA is enabled and is working properly.

How to Use and Manage an EA in MetaTrader 4

In order to get your Expert Advisor (EA) working, drag and drop your EA anywhere on your chart.

A box will then pop-up with a number of different tabs (About, Common, Inputs, Dependencies) across the top.

Make sure that under the **Common tab >> Live Trading >> “Allow Live Trading”** is checked.



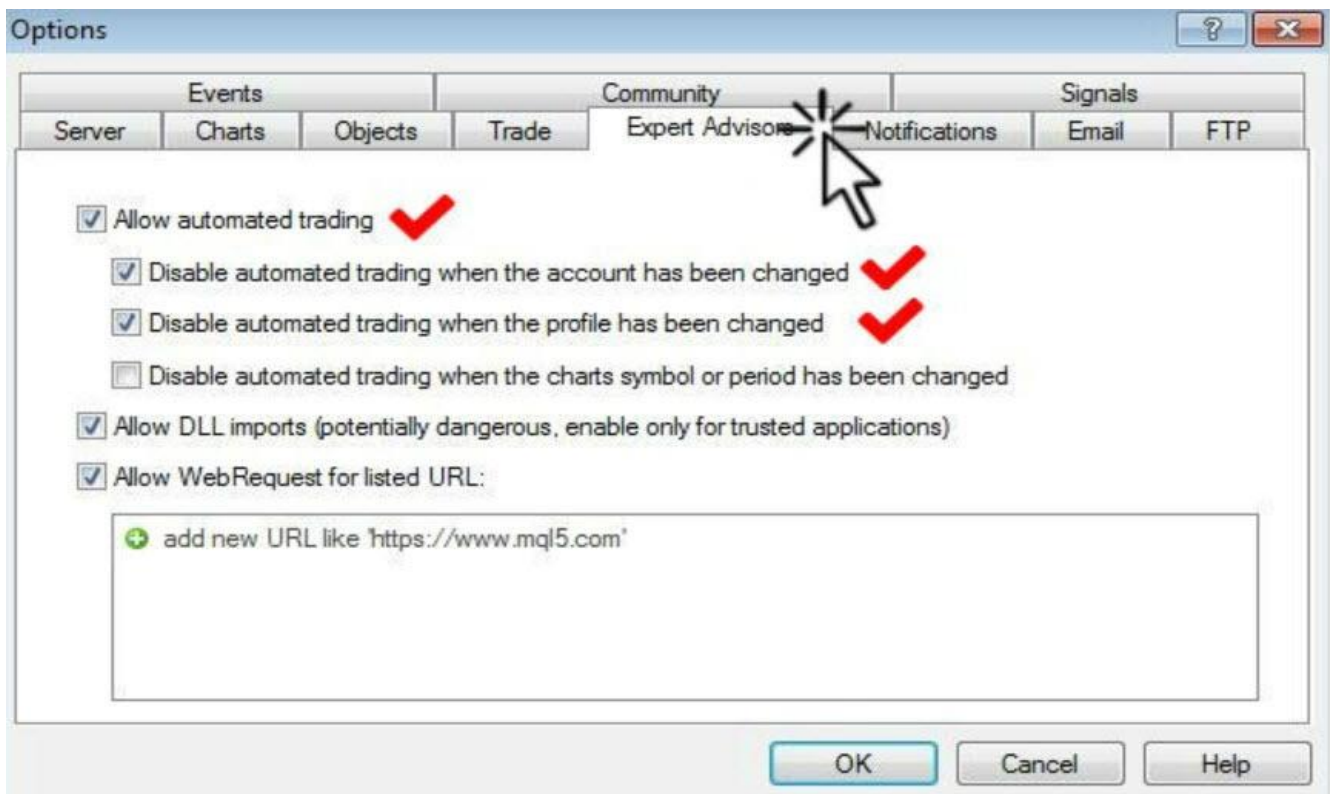
Allow Automated Trading

The next step is to make sure that some other relevant settings under the **Menu >> Tools >> Options >> Expert Advisors** tab are set properly so that your MT4 platform will allow your EAs to run.

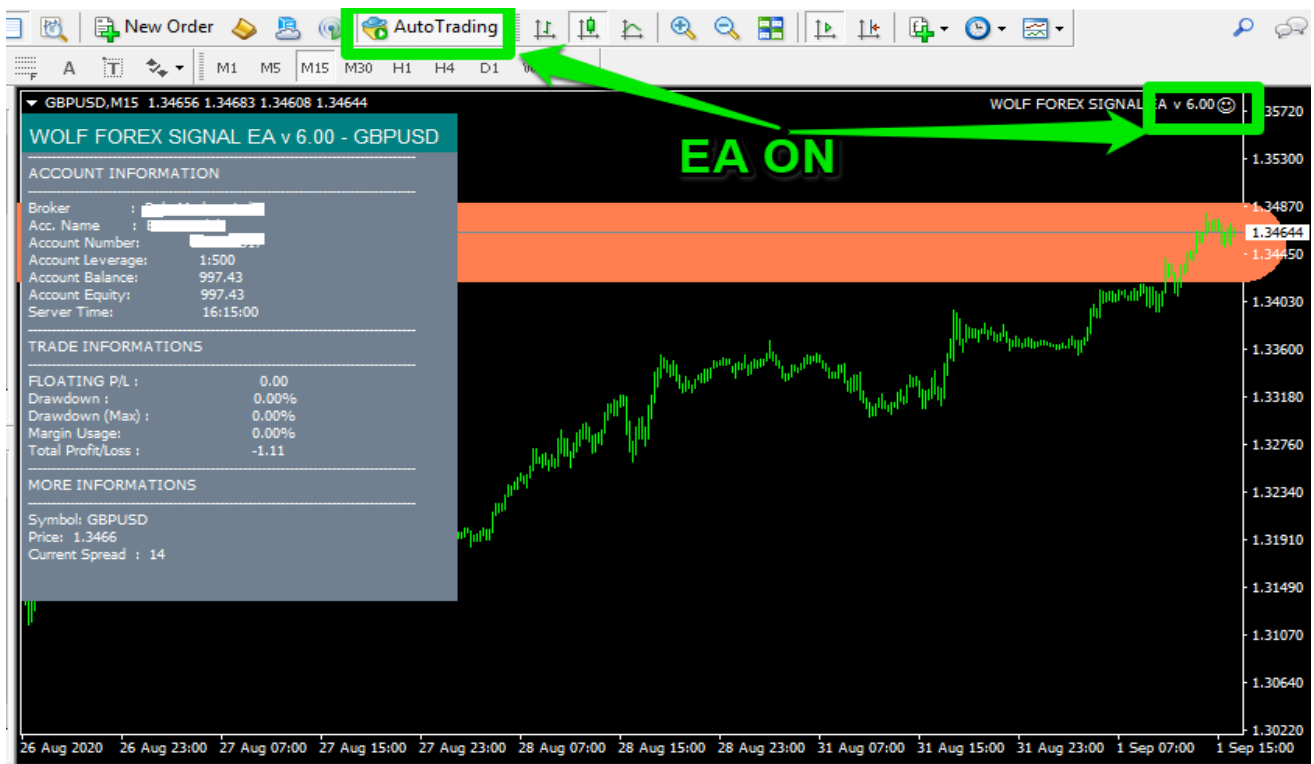
Due to safety reasons, the “*Allow automated trading*” box is disabled by default and we need to enable it.

The subsequent two very important options “*Disable automated trading when the account has been changed*”, and “*Disable automated trading when the profile has been changed*” are also designed to protect your capital in case you switch from one account to another.

This function will ensure that all active Expert Advisors will automatically shut down. We recommend leaving these two options ticked.



Once the “Allow automated trading” option is ticked your EA is ready to run. Alternatively, you can always turn your EA On or Off by clicking on the “AutoTrading” button in your toolbar. You can also disable all your EA's by pressing the same button again.



Settings management

TIME FRAME M1	For very high risk	For high risk	For Medium risk	For low risk
Settings	risk=80 SL=70 TP=50	risk=40 SL=70 TP=50	risk=20 SL=70 TP=50	risk=5 SL=70 TP=50
Management of deals	1000 = 0.08 par 1 trade	1000 = 0.04 par 1 trade	1000 = 0.02 par 1 trade	1000 = 0.01 par 1 trade
Currency pair	Only GBPUSD	Only GBPUSD	Only EURUSD	eurcad + audjpy
Drawdown	35 TO BOOM	25 TO BOOM	25 TO 40	15 TO 30

TIME FRAME M15	For very high risk	For high risk	For Medium risk	For low risk
Settings	risk=80 SL=70 TP=50	risk=40 SL=70 TP=50	risk=20 SL=70 TP=50	risk=5 SL=70 TP=50
Management of deals	1000 = 0.08 par 1 trade	1000 = 0.04 par 1 trade	1000 = 0.02 par 1 trade	1000 = 0.01 par 1 trade
Currency pair	Only GBPUSD	Only GBPUSD	Only EURUSD	eurcad + audjpy
Drawdown	35 TO 65	20 TO 39	17 TO 23	7 TO 15

TIME FRAME M30	For very high risk	For high risk	For Medium risk	For low risk
Settings	risk=80 SL=70 TP=50	risk=40 SL=70 TP=50	risk=20 SL=70 TP=50	risk=5 SL=70 TP=50
Management of deals	1000 = 0.08 par 1 trade	1000 = 0.04 par 1 trade	1000 = 0.02 par 1 trade	1000 = 0.01 par 1 trade
Currency pair	Only GBPUSD	Only GBPUSD	Only EURUSD	eurcad + audjpy
Drawdown	25 TO 50	15 TO 31	12 TO 20	5 TO 12

All rights reserved © 2020