

X-SPEED

System Manual

Risk warning

Before you begin trading on Real account please carefully consider your investment goals, risk and experience you have. It should be noted that Forex is a leverage based market. It should be remembered that leverage can work both in your advantage and disadvantage as well. Therefore there is high risk of losing a part or all of your financial input placed on your account and because of that you should remember to trade with the amount of money which you can lose without taking any influential financial damage.

Disclaimer

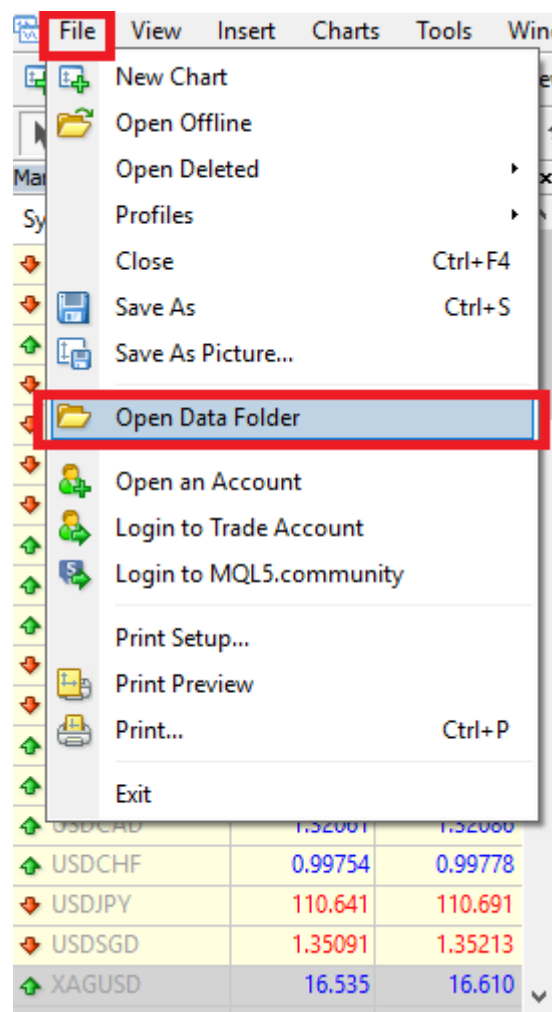
Signals generated by the system are not investment recommendations. All materials included on the website, as well as all system components (indicators, instruction manual) are for educational purposes only. Creators of the system will not take any responsibility for any profit or loss/damage caused by using the system.

Copyright © 2022 www.mt4xspeed.com All rights reserved.

Unless otherwise indicated, all materials on these pages are copyrighted by the fxvector.net. All rights reserved. No part of these pages, either text or image may be used for any purpose other than personal use. Therefore, reproduction, modification, in any form or by any means, electronic, or otherwise, for reasons other than personal use, is strictly prohibited without prior written permission.

1. Installation proces.

- Open your MT4
- Click 'File/Open Data Folder' from the top tab.



- Copy templates files to the 'Templates' folder.

config	15.06.2018 14:09
history	08.05.2018 16:03
logs	16.06.2018 09:40
MQL4	08.05.2018 16:01
profiles	13.06.2018 10:20
templates	15.06.2018 22:52
tester	13.06.2018 10:44
origin	08.05.2018 16:01

- Copy indicator files to the 'MQL4>Indicators' folder.

Experts	08.05.2018 16:02
Files	08.05.2018 16:01
Images	08.05.2018 16:01
Include	08.05.2018 16:01
Indicators	15.06.2018 22:29
Libraries	08.05.2018 16:02
Logs	16.06.2018 09:40
Presets	08.05.2018 16:01
Projects	08.05.2018 16:01
Scripts	08.05.2018 16:02

- Restart your MT4

- Open your favourite chart. Press the right mouse button and pick XSPEED template depending on your risk appetite.

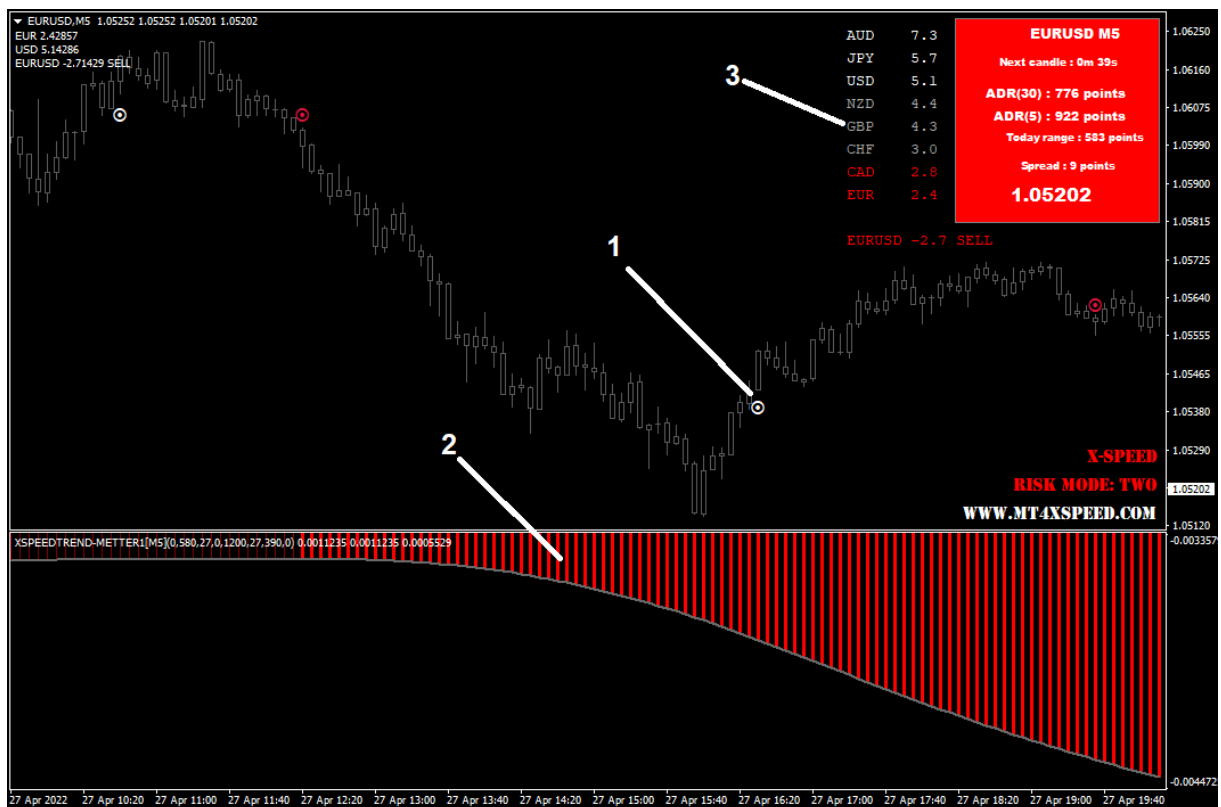
- XSPEED RISK MODE ONE (Provides balanced and stable signals. Perfect for most traders. Use it for typical daytrading or swingtrading)

- XSPEED RISK MODE TWO (Provides faster signals with increased risk and also increased profit potential. Use it for scalping, or fast daytrading)

SYSTEM OVERVIEW

System contains 3 main indicators:

1. Entry Indicator (BUY / SELL Signals).
2. Trend Confirmation.
3. Additional Confirmation CS dashboard.

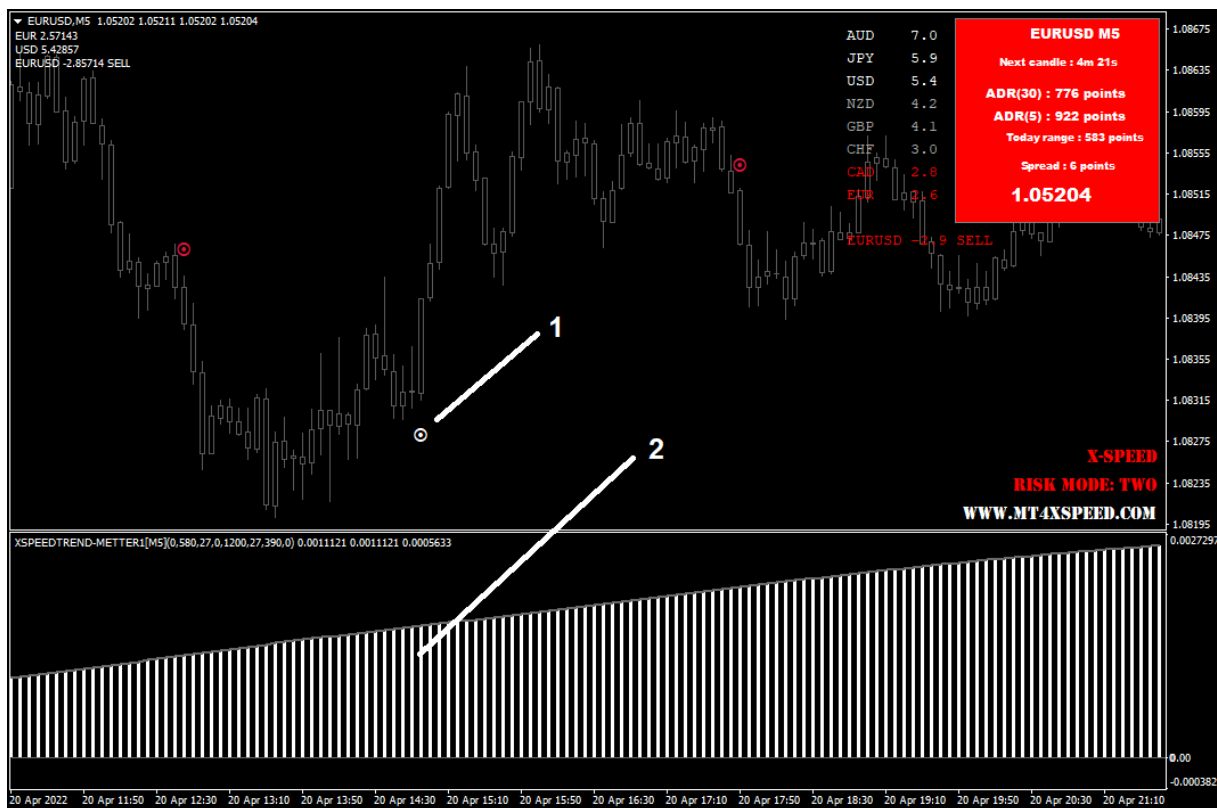


ENTRY EXAMPLE (BUY SIGNALS)

System signals are easy to read. We need the same color on entry and bottom indicator. There are two different types of entries (strong and moderate). Strong signals usually show up when the trend is fresh and market is strong. Moderate signals comes later, when market is still trending but the momentum is lower.

STRONG BUY SIGNAL:

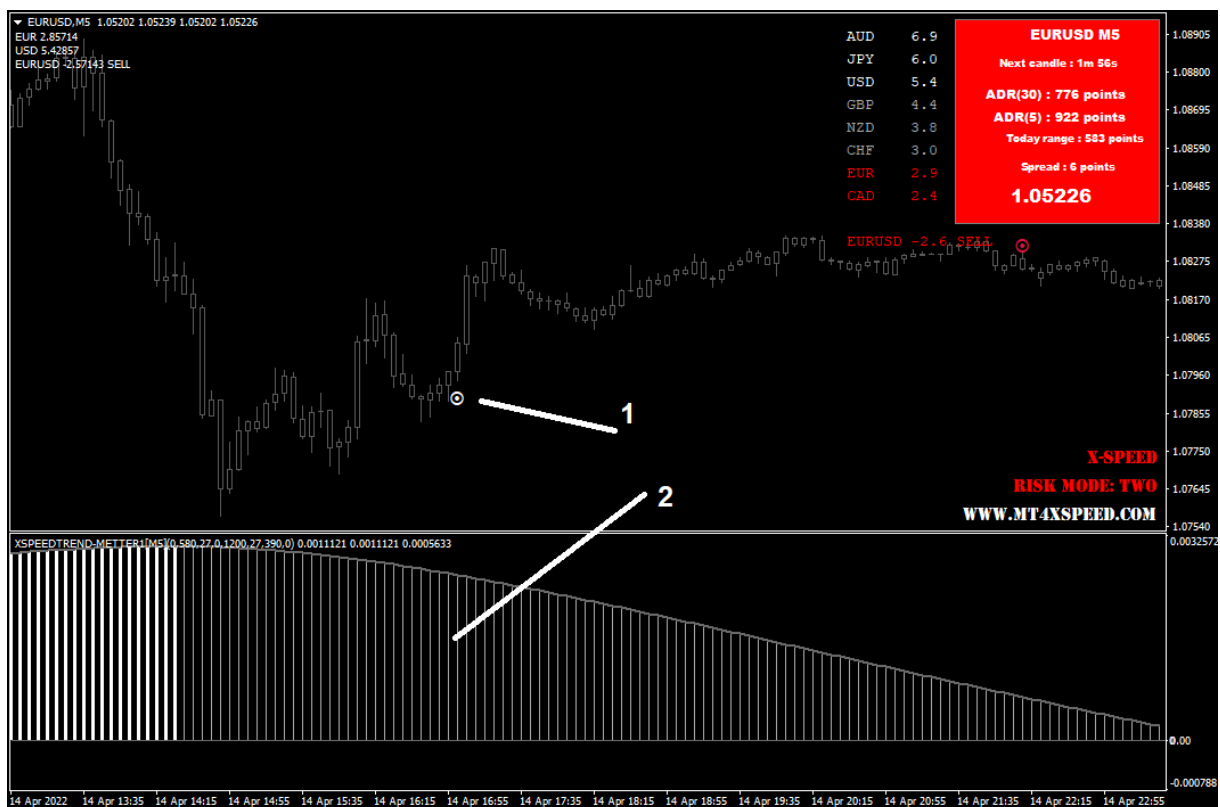
1. White DOT on the chart.
2. White Trend bottom confirmation.



ENTRY EXAMPLE (BUY SIGNALS)

MODERATE BUY SIGNAL:

1. White DOT on the chart.
2. Grey. Trend bottom confirmation.

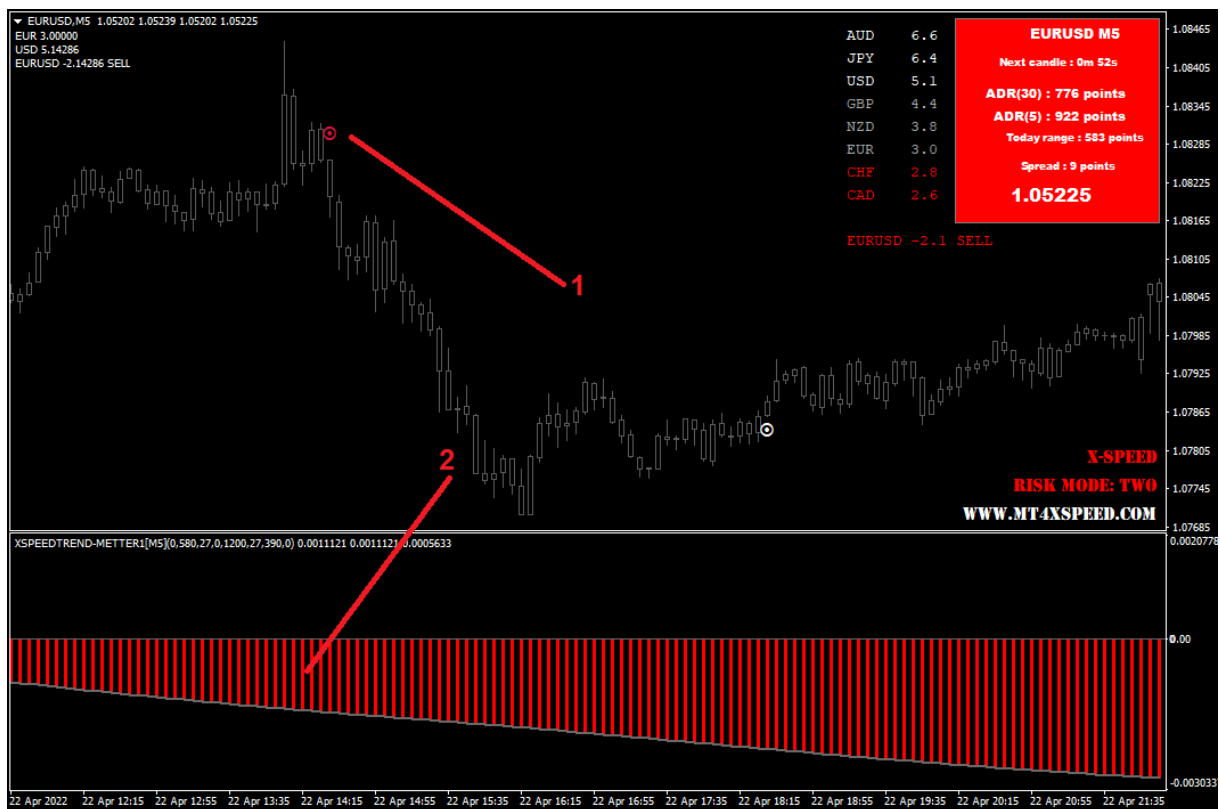


ENTRY EXAMPLE (SELL SIGNALS)

Sell signals works pretty much the same way, just colors are reversed.

STRONG SELL SIGNAL:

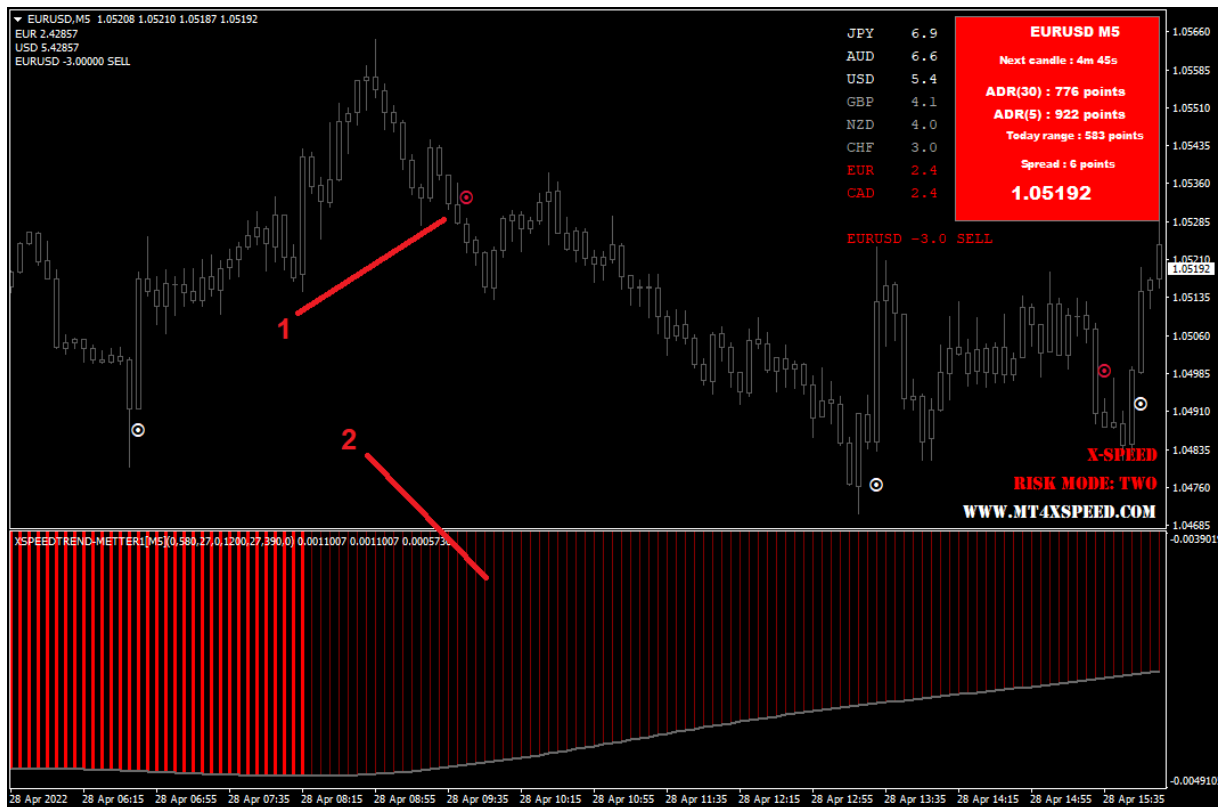
1. Red DOT on the chart.
2. Red Trend bottom confirmation.



ENTRY EXAMPLE (SELL SIGNALS)

MODERATE SELL SIGNAL:

1. Red DOT on the chart.
2. Crimson Trend bottom confirmation.



ADDITIONAL CONFIRMATION

System contains also CS dashboard. It provides easy to read information about the trend on particular pair.

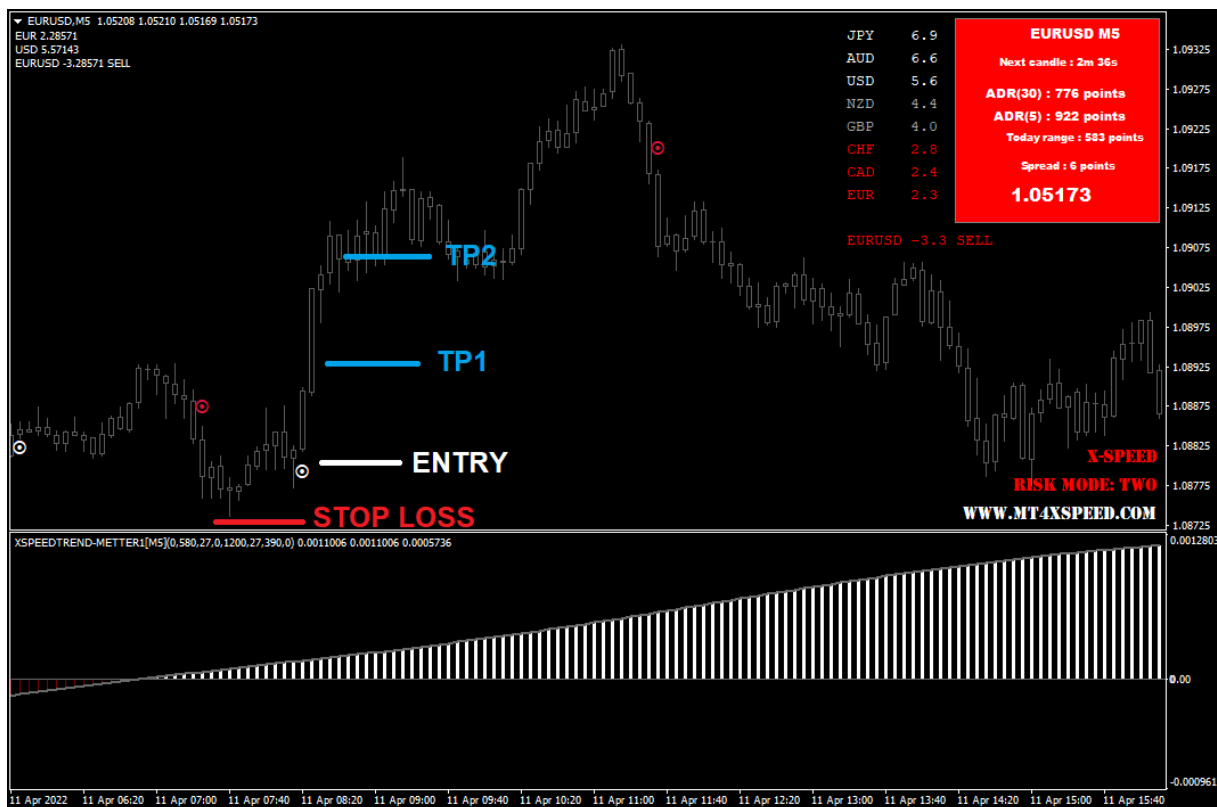
USD	7.0
JPY	6.4
EUR	5.0
CAD	5.0
CHF	4.2
NZD	3.4
AUD	3.4
GBP	1.3
EURUSD -2.0 SELL	

TAKE PROFIT / STOP LOSS

Stop loss should be placed below last swing low (for BUY Trades), and last swing high (for SELL Trades).

Take profit 1 is equal to stop loss (pips wise).

Take profit 2 is double stop loss pip value.



You can also use your own entry/exit techniques like:

- round numbers
- support and resistance
- supply/demand levels

If you need any assistance let us know!

support@mt4xspeed.com