

VMFX

System Manual

Risk warning

Before you begin trading on Real account please carefully consider your investment goals, risk and experience you have. It should be noted that Forex is a leverage based market. It should be remembered that leverage can work both in your advantage and disadvantage as well. Therefore there is high risk of losing a part or all of your financial input placed on your account and because of that you should remember to trade with the amount of money which you can lose without taking any influential financial damage.

Disclaimer

Signals generated by the system are not investment recommendations. All materials included on the website, as well as all system components (indicators, instruction manual) are for educational purposes only. Creators of the system will not take any responsibility for any profit or loss/damage caused by using the system.

Copyright © 2022 www.forexobroker.com All rights reserved.

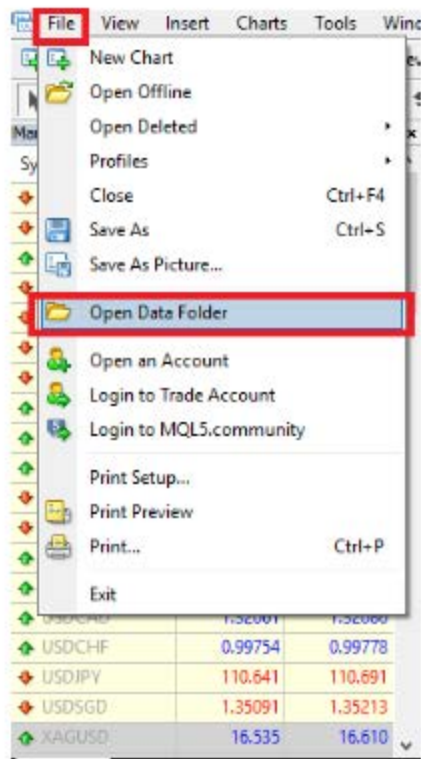
Unless otherwise indicated, all materials on these pages are copyrighted by the www.forexobroker.com.

All rights reserved. No part of these pages, either text or image may be used for any purpose other than personal use. Therefore, reproduction, modification, in any form or by any means, electronic, or otherwise, for reasons other than personal use, is strictly prohibited without prior written permission.

1. Installation proces.

- Open your MT4

- Click 'File/Open Data Folder' from the top tab.



- Copy templates files to the 'Templates' folder.

config	15.06.2018 14:09
history	08.05.2018 16:03
logs	16.06.2018 09:40
MQL4	08.05.2018 16:01
profiles	13.06.2018 10:20
templates	15.06.2018 22:52
tester	13.06.2018 10:44
origin	08.05.2018 16:01

- Copy indicator files to the 'MQL4>Indicators' folder.

Experts	08.05.2018 16:02
Files	08.05.2018 16:01
Images	08.05.2018 16:01
Include	08.05.2018 16:01
Indicators	15.06.2018 22:29
Libraries	08.05.2018 16:02
Logs	16.06.2018 09:40
Presets	08.05.2018 16:01
Projects	08.05.2018 16:01
Scripts	08.05.2018 16:02

- Restart your MT4

- Open your favourite chart. Press the right mouse button and pick VMFX template.

VMFX-SW – is the safest one. The risk is small, entries are a bit slower but they are more filtered than other signals. Pick this template if you expect smaller, but more sure profits.

VMFX-DT is the most balanced template. Risk is higher, entries are faster than previous template, but still at safe/medium risk level. This mode is ideal for typical daytrading.

VMFX-SC– is the fastest template. It provides the faster signals with increased risk. Pick this one only if you are experienced trader, or when you have spent sufficient time with the trading system.

VMFX-ADVSC– is a special mode for catching top and bottoms of any trend (even those smaller ones on M1 timeframe). It does not provide extra filtering with the bottom trend indicator.

System overview

System contains four indicators.

1. Entry/Exit Indicator (blue/red boxes).
2. Analysis Dashboard (located in the upper right corner).
3. Fast Pair changer (bottom right corner).
4. Additional trend filtering (bottom of the chart).



ENTRY EXAMPLE (BUY SIGNAL)

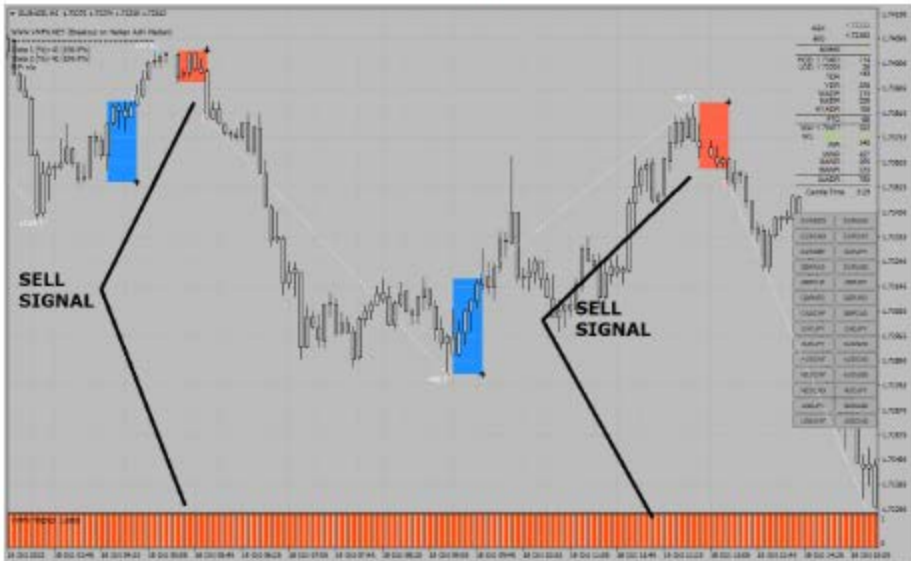
Entries are very easy to spot. Blue boxes should be paired with the blue bottom trend indicator.

When both indicators are in agreement BUY signals are fully confirmed.



ENTRY EXAMPLE (SELL SIGNAL)

Sell signals are pretty much the same, we have just different colors to match. Every red box paired with the red trend bottom indicator is a valid sell signal.



STOP LOSS AND TAKE PROFIT

Stop loss order should be placed below (buy signal) or above (sell signal) the entry box.

Take profit can be realized at $RR=1:1$ (TP1) or $RR=1:2$ (TP2)



SPECIAL TOP AND BOTTOMS MODE

System contains also very fast template without the confirmation of the bottom indicator (template: VMFX-ADVSC).

This mode is more aggressive than any other templates, but it can also provide the highest profits. Please make sure to secure your orders fast when trading with this mode.



RANGING MARKET

When you also see no clear direction on the market (constant changing of the bottom trend confirmation indicator), you can also use special top and bottoms mode (template: VMFX-ADVSC).



If you need any assistance let me know!

Best Regards,

HAPPY TRADING!